

SPIRAPAK PLUS MODULES

High Productivity Potted Ultrafiltration Spiral Modules for Electrocoat Paint

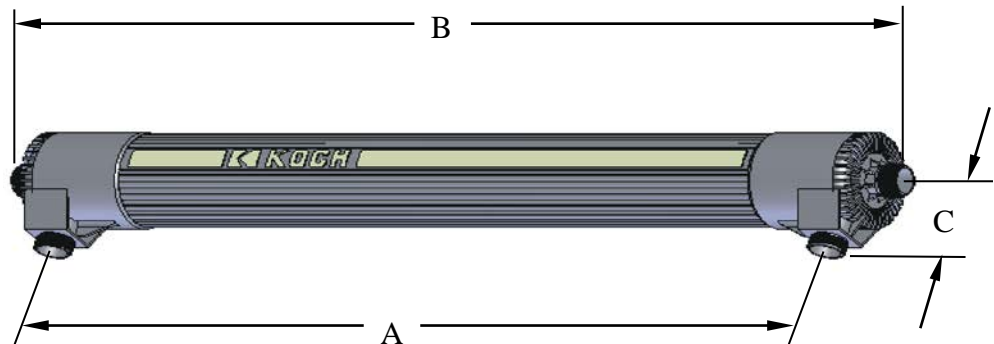
PRODUCT DESCRIPTION	Membrane Chemistry:	PVDF
	Membrane Type:	HFM-183 (positive charge)
	Construction:	Spiral wound element with integrated PVC housing
	Seal:	EPDM

NOMINAL SPECIFICATIONS	Model	Part Number	Membrane Area ft ² (m ²)	Feed Spacer mil (mm)
	SPIRAPAK PLUS 4033-M183-LPP	0700787	63 (5.9)	30 (0.8)
SPIRAPAK PLUS 4033-M183-VPP	0700788	54 (5.0)	43 (1.1)	
SPIRAPAK PLUS 4038-M183-LPP3	0750783	81 (7.5)	30 (0.8)	
SPIRAPAK PLUS 4038-M183-VPP3	0750795	65 (6.0)	46 (1.2)	

OPERATING AND DESIGN INFORMATION*	Maximum Inlet Pressure:	80 psi @ 110°F (5.5 bar @ 43°C)
	Maximum operating temperature:	125°F (52°C)
	Allowable pH – continuous operation:	3 – 7 @ 125°F (52°C)
	Allowable pH – short term cleaning:	2 – 7 @ 125°F (52°C)
	Maximum Feed Side Pressure Drop:	40 psi @ 125°F (2.8 bar @ 52°C)
	Maximum Permeate Pressure:	5 psi (0.3 bar)

*Consult Process Technology Group for specific information.

NOMINAL DIMENSIONS



Model	A inches (mm)	B inches (mm)	C inches (mm)	Working Weight lbs (kg)	Permeate/Process Connections
SPIRAPAK PLUS 4033	37 (940)	44 (1,120)	2.5 (64)	45 (20)	1- ¼ NPSM
SPIRAPAK PLUS 4038	50 (1,260)	56 (1,430)	2.5 (64)	45 (20)	1- ¼ NPSM

SPIRAPAK PLUS MODULES

MEMBRANE INCOMPATIBILITY

Prior to exposing the membrane to any chemical, the chemical should be reviewed by Koch Membrane Systems. Aside from the listed chemicals below, synthetic coolants, semi-synthetic coolants, kerosenes, naphtha, gasoline, floc polymers may affect membrane performance.

Chemicals that should be avoided include the following:

Aprotic Solvent (e.g. Dimethyl Formamide, Dimethyl Acetamide, N-Methyl Pyrrolidine, etc.)

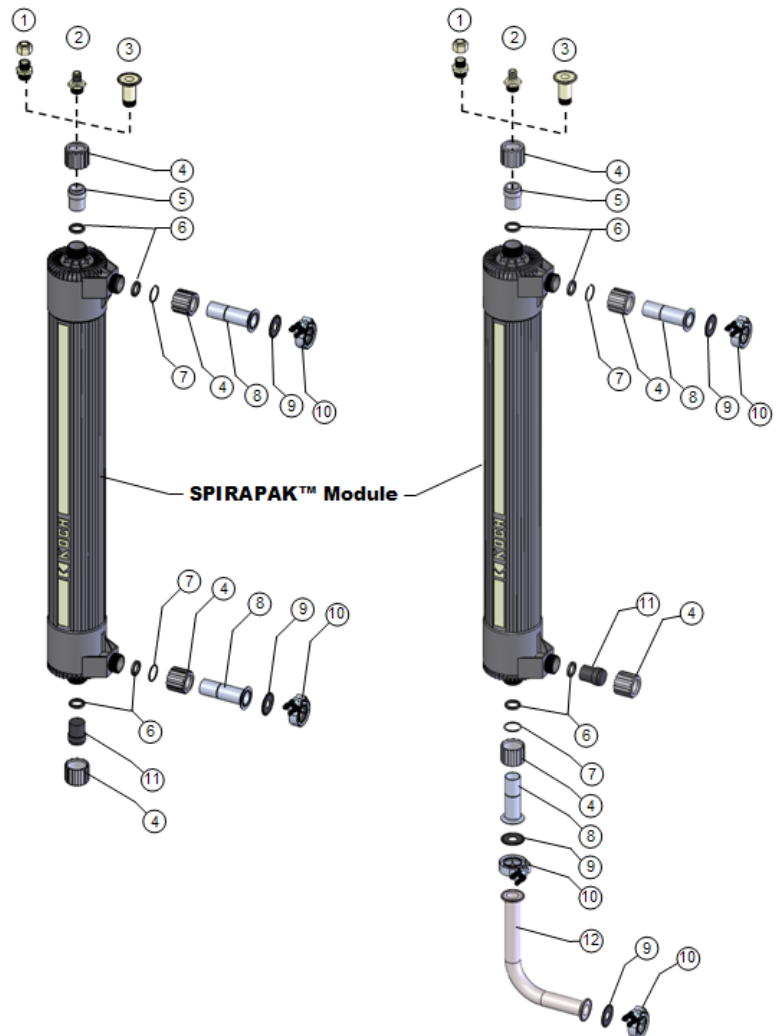
Chlorinated Solvents (e.g., Methylene Chloride, Chloroform, Carbon Tetrachloride, etc.)

Ketones (e.g. Acetone, Diacetone Alcohol, etc.)

Silicones or Silicone based Defoamers (e.g. Siloxane)

OPTIONS OF SPIRAPAK MODULE ASSEMBLY

Item	Description	Qty/ Unit	KPN
1	Permeate connection Option #1 – 5/8" OD Rigid Tubing	1	0231208
2	Permeate connection Option #2 – 1/2" ID Flex hose	1	0231207
3	Permeate connection Option #3 – 1 1/2" Sanitary ferrule	1	0212300
4	Nut	4	0020281
5	Permeate adapter	1	0030375
6	Seal washer	4	0020370
7	Retaining ring	2	0020310
8	Process adapter	2	0216003
9	1 1/2" Sanitary seal	2	0090400
10	1 1/2" Sanitary coupling	1	0210465
11	Process plug	1 or 2	0030040
12	Product Extension	1	0216002



SERVICE AND ONGOING TECHNICAL SUPPORT

Koch Membrane Systems, Inc. has an experienced staff of professionals available to assist end-users and OEMs for optimization of existing systems and support the development of new applications. Along with the availability of supplemental technical bulletins, Koch Membrane Systems, Inc. also offers a complete line of KOCHKLEEN® cleaning chemicals.

The information contained in this publication is believed to be accurate and reliable, but is not to be construed as implying any warranty or guarantee of performance. We assume no responsibility, obligation or liability for results obtained or damages incurred through the application of the information contained herein. Refer to Standard Terms and Conditions of Sale and Performance Warranty documentation for additional information.

Koch Membrane Systems, Inc., www.kochmembrane.com

Corporate Headquarters: 850 Main Street, Wilmington, Massachusetts 01887-3388 USA. Tel.: 1-888-677-KOCH.

For related trademark information, visit www.kochmembrane.com/legal

Koch Membrane Systems, Inc. is a Koch Chemical Technology Group, LLC company.

© 2018 Koch Membrane Systems, Inc. All rights reserved worldwide.

06/18 Rev 18-1